



# Gosford J24 Regatta 1 & 2 October 2016

## Sailing Instructions



### **Organising Authority:**

**Gosford Sailing Club**  
**28 Masons Parade, Gosford NSW 2250**  
**Telephone (02) 4325 7216**  
**Facsimile (02) 4323 4488**  
**E-mail: info@gossail.com.au**

**On Behalf of**  
**J24 Class Association NSW Inc**  
**Email: dockpaula@gmail.com**

**Event website:**  
**[www.j24.com.au](http://www.j24.com.au)**

## Table of Contents

<b>1</b>	<b>Rules</b>	<b>3</b>
<b>2</b>	<b>Entries</b>	<b>3</b>
<b>3</b>	<b>Notice to Competitors</b>	<b>3</b>
<b>4</b>	<b>Changes in Sailing instructions</b>	<b>4</b>
<b>5</b>	<b>Signals Made Ashore</b>	<b>4</b>
<b>6</b>	<b>Schedule of Racing</b>	<b>4</b>
<b>7</b>	<b>Racing Area</b>	<b>5</b>
<b>8</b>	<b>The Courses</b>	<b>6</b>
<b>9</b>	<b>Marks</b>	<b>6</b>
<b>10</b>	<b>Committee Vessels</b>	<b>7</b>
<b>11</b>	<b>The Start</b>	<b>7</b>
<b>12</b>	<b>Recalls</b>	<b>7</b>
<b>13</b>	<b>Changes to the Course after the Start</b>	<b>7</b>
<b>14</b>	<b>The Finish</b>	<b>7</b>
<b>15</b>	<b>Measurement</b>	<b>7</b>
<b>16</b>	<b>Time Limit</b>	<b>7</b>
<b>17</b>	<b>Protests</b>	<b>8</b>
<b>18</b>	<b>Penalty Systems</b>	<b>8</b>
<b>19</b>	<b>Scoring</b>	<b>8</b>
<b>20</b>	<b>Support Vessels</b>	<b>8</b>
<b>21</b>	<b>Haul Out Restrictions</b>	<b>8</b>
<b>22</b>	<b>Radio Communications</b>	<b>9</b>
<b>23</b>	<b>Trophies and Function</b>	<b>9</b>
<b>24</b>	<b>Entry Disclaimer and Risk Warning</b>	<b>9</b>
<b>25</b>	<b>Insurance</b>	<b>10</b>
<b>26</b>	<b>Rubbish Disposal</b>	<b>10</b>
<b>27</b>	<b>Rights to use Names and Likeness</b>	<b>10</b>
	<b>Further Information</b>	<b>11</b>

## **1 RULES**

The regatta will be conducted under the following:

- 1.1 The Current Racing Rules of Sailing (RRS) of the International Sailing Federation (ISAF).
- 1.2 The Prescriptions and Special Regulations of Australian Sailing
- 1.3 The Boating (Safety Equipment) Regulations of NSW.
- 1.4 The current International J24 Class Rules
- 1.5 These Sailing Instructions.
- 1.6 The Notice of Race, as amended by these Sailing Instructions.
- 1.7 The Rules of the International J24 Class 2016 are changed as follows:
  - 1.7.1 Where a boat deviates from the rules of measurement on hull and rigging, such deviation may be considered legal when a class measurer is satisfied that the item in question is 'as supplied by the licensed builder at the time of manufacture'. The measurement certificate shall be endorsed appropriately by the class measurer.
  - 1.7.2 Class rule 5.3 is changed as follows: A boat may sail with different crew on different days provided the crew changes are declared at registration. The number of declared crew shall remain the same throughout the regatta. Crew changes not declared at registration require advance written approval of the Race Officer and will only be approved in exceptional circumstances.

## **2 ENTRIES**

- 2.1 The Regatta will be conducted for the NSW J24 Class Association by Gosford Sailing Club. All yachts competing in the Regatta should have third party insurance cover of not less than \$10,000,000.
- 2.2 All yachts competing in these races do so at their own risk and responsibility. The Gosford Sailing Club, any Sponsor, Regatta Officials and the Class Association are not responsible for any damage or injury either afloat or ashore.
- 2.3 The Gosford Sailing Club, any Sponsor, Regatta Officials and the Class Association are not responsible for the seaworthiness of a boat whose entry is accepted or the sufficiency or adequacy of its equipment.

## **3 NOTICES TO COMPETITORS**

- 3.1 The Regatta Office is situated at the Sailing Office of the Gosford Sailing Club.
- 3.2 The Official Regatta Notice Board is located in the entrance foyer of the Gosford Sailing Club.

#### **4 CHANGES IN SAILING INSTRUCTIONS**

- 4.1 Any change in the Sailing Instructions will be posted on the Official Notice Board before 1030 hours on the day it will take effect.
- 4.2 Changes to the schedule of races will be posted by 2000 hours on the day before it will take effect.

#### **5 SIGNALS MADE ASHORE**

- 5.1 Signals made ashore will be displayed at the Gosford Sailing Club flagpole.
- 5.2 Code flag "AP", Answering Pennant displayed ashore means, "All races not yet started are postponed". The Warning Signal will be made not less than 45 minutes after "AP" is lowered. Amends Race Signals AP.

#### **6 SCHEDULE OF RACING**

- 6.1 Races are scheduled as follows.

##### **Saturday, 1 October 2016**

Briefing 1030

Race 1 1155 Warning Signal

Race 2 As soon as practicable after race 1

Race 3 As soon as practicable after race 2

##### **Sunday, 2 October 2016**

Race 4 1155 Warning Signal

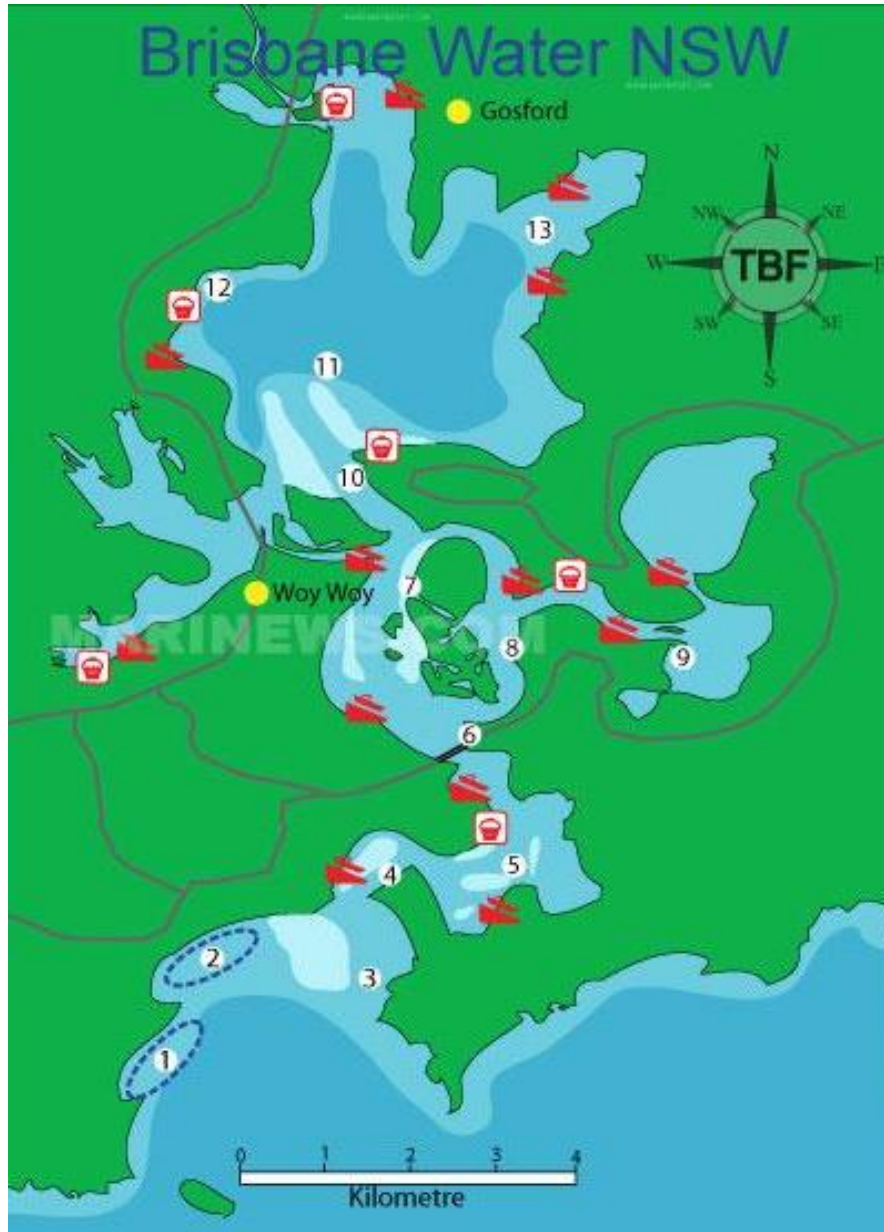
Race 5 As soon as practicable after race 4

Race 6 As soon as practicable after race 5

- 6.2 It is the intention of the Race Committee to conduct the races as shown above, but the Race Committee may alter the Schedule of Races as required.
- 6.3 The Race Committee may alter the schedule and number of races sailed at any time, but will only advance the Regatta by not more than one (1) race per day.
- 6.4 After a long postponement and when more than one race will be held on the day, to alert boats that a race will begin soon, the "AP" flag will be displayed with two sound Signals for at least four minutes before a warning signal is displayed.
- 6.5 At the end of racing each day, the Race Committee will fly "AP over A".
- 6.6 No warning signal will be made after 1430 hrs on Sunday 2 October 2016.

## 7 RACING AREA

- 7.1 The racing area will be Brisbane Waters approximately 1-2nm south of Gosford Sailing Club. Helmspersons are advised that the water north of the cardinal mark at Point Frederick is extremely shallow.

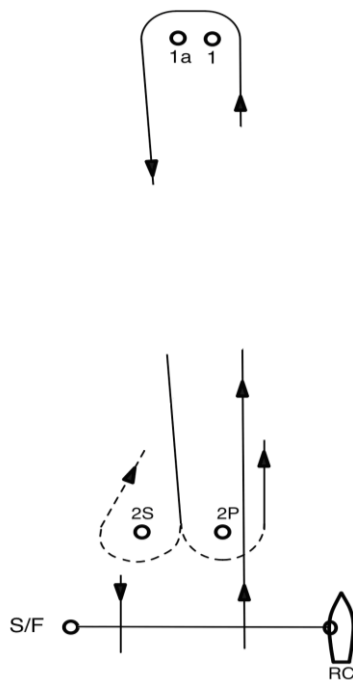


## 8 **THE COURSES**

The diagram below shows the approximate course configuration.

### 8.1 Courses shall be windward/leeward.

Windward / Leeward Course



Mark 1 and mark 1a shall be laid to windward of the starting line. Mark 1a shall be an offset mark approximately 50 metres from mark 1. Mark 1 and 1a shall be rounded to Port.

Mark 2S and 2P may be laid approximately 50 metres to windward of the starting line and shall form a gate with either mark 2S rounded to Starboard or 2P rounded to Port. (Note: Marks 2S and 2P may be laid after the starting signal)  
The course to be sailed will be indicated by a numeral pennant.

### 8.2 Course Configuration

Course 1 Start – 1 – 1a – Finish

Course 2 Start – 1 – 1a – 2S or 2P – 1 – 1a – Finish

Course 3 Start – 1 – 1a – 2S or 2P – 1 – 1a – 2S or 2P – 1 – 1a – Finish.

### 8.3 A numerical pennant 1,2 or 3 will be flown at the Warning Signal indicating the course to be sailed.

### 8.4 Courses will be set with the aim to achieve 45 minute elapsed times. Failure to meet this target time will not be grounds for redress. This changes RRS 62.1(a).

## 9 **MARKS**

9.1 Mark 1, 1a, 2S & 2P shall be orange spheres.

9.2 The start / finish mark will be a red and white quartered flag.

## **10 COMMITTEE VESSEL**

- 10.1 The Committee Vessel at the start and finish of each race will display the GSC burgee.

## **11 THE START**

- 11.1 The Class Flag will be Code Flag "J"
- 11.2 Starting will be in accordance with RRS 26.
- 11.3 The start line will be between a staff displaying an orange flag on the Race Committee Vessel and the start mark, a red and white quartered flag.
- 11.4 A crowding mark may be laid adjacent to the Committee Boat. When laid, boats approaching the line to start shall leave the crowding mark on the same required side as the Committee Boat.
- 11.5 A boat shall not start later than four minutes after her starting signal.

## **12 RECALLS**

- 12.1 **Individual Recalls**  
Individual Recalls will be signaled in accordance with RRS 29.1.
- 12.2 **General Recalls**  
Shall be in accordance with RRS 29.2.  
The Preparatory Signal for the new start shall be made one minute after the First Substitute is lowered.

## **13 CHANGE OF COURSE AFTER THE START**

- 13.1 Courses will not be changed after the start.
- 13.2 The Race Committee may abandon the race in case of a persistent wind shift exceeding 30 degrees or wind strength exceeds 30 knots for a five minute period. Amends RRS 33.
- 13.3 The course may be shortened after the start in accordance with RRS 32.

## **14 THE FINISH**

- 14.1 The Finishing Line will be between the signal mast displaying a blue on station flag on the Race Committee Vessel and the Finish Mark a red and white quartered flag.

## **15 MEASUREMENT**

- 15.1 Measurement may take place on a discretionary basis during the series. The Race Committee reserves the right to measure and inspect any boat during the course of the series.

## **16 TIME LIMIT**

- 16.1 The time limit will be 1 hour. Boats failing to finish within the time limit will be scored Time Limit Expired (TLE). If no boat finishes within the time limit, the race committee shall abandon the race. This changes RRS 35.

- 16.2 Boats failing to finish within 20 minutes of the first placed boat will be scored Time Limit Expired (TLE). This changes RRS 35.

## **17 PROTESTS**

- 17.1 Protests shall be written on the ISAF prescribed forms and lodged at the GSC Sailing Office within 1 hour after the time of the last boat's finish in the last race of the day. Amends RRS 61.3.
- 17.2 Protest notices will be posted on the Official Regatta Notice Board within 30 minutes of the protest time limit to inform competitors where and when there is a hearing.
- 17.3 The Protest Committee may hear protests in approximately the order of receipt as soon as possible after the protest time limit.

## **18 PENALTY SYSTEMS**

- 18.1 The penalty for breaking a rule of Part 2 of the RRS shall be a One Turn Penalty (one tack and one gybe in the same direction) except that for infringements occurring within the Zone as defined in the current RRS the penalty shall be a Two Turns Penalty (two tacks and two gybes in the same direction). This changes RRS 44.1 and 44.2.

## **19 SCORING**

- 19.1 The Low Point Scoring System as set out in Appendix A2 of the current ISAF Racing Rules will apply.
- 19.2 Each boat's series score will be the total of her Race Scores, discarding her worst score after 5 races are completed, except when prohibited in Rule A1.3. The lowest series score wins.
- 19.3 A minimum of 3 races is necessary to constitute the series.
- 19.4 Boats scored TLE will be scored points equal to the number of boats finishing within the time limit plus two points by the race committee without a hearing. This changes rule A4.2, A5, and A11.

## **20 SUPPORT VESSELS**

- 20.1 Team leaders, coaches and other support personnel or vessels shall not approach closer than 50 metres to any boat racing. The penalty for failing to comply may be the disqualification of all boats associated with the infringing vessels.

## **21 HAUL - OUT RESTRICTIONS**

- 21.1 This regatta is a 'wet' series and yachts shall remain afloat throughout the regatta. Boats shall not be kept in "boat bags" during the regatta.
- 21.2 All boats must be in the water by 1000 hours on Saturday 1 October 2016.
- 21.3 The Race Committee may approve a written request for a boat to be hauled at any time for essential repairs. Haul out approval is only to facilitate work that could not be done afloat.



## **22 RADIO COMMUNICATIONS**

- 22.1 Except in an emergency, a boat shall neither make radio transmission while racing nor receive radio communication not available to all boats. This prohibition includes use of mobile phones.
- 22.2 In accordance with RRS41, the Race Committee may broadcast the course to be sailed, names/sail numbers of OCS boats and/or any information of interest to competitors. Any failure of, or defect in, such a broadcast will not be grounds for redress. For this purpose boats may carry a VHF radio. Boats may transmit on VHF radio to communicate in the event of an emergency or upon retiring from a race or at the request of the Race Committee.
- 22.3 The designated race frequency is VHF 73

## **23 TROPHIES & FUNCTIONS**

- 23.1 On Saturday 1 October, Happy Hour will be held courtesy of NSW J24 Association 5.30-6.30pm at Gosford Sailing Club.
- 23.2 Trophies shall be presented at Prize Giving at the Prize giving on Sunday 2 October 2016.
- 23.3 The awarding of any trophies shall be subject to decisions of outstanding protests and appeals.

## **24 ENTRY DISCLAIMER AND RISK WARNING**

### **24.1 Disclaimer:**

It is the responsibility of owners and skippers to ensure that each boat nominated on the entry form complies with the 'rules' as defined in the RRS.

All competitors who sign the entry form, in doing so, have made a declaration to the Organising Authority that the nominated boat will, at all times while racing, comply with the requirements of Australian Sailing, the Notice of Race and Sailing Instructions, including:

- (a) RRS 46 and it is the responsibility of the person in charge of the boat to ensure that the crew complies with RRS 56;
- (b) The Yachting Australia Special Regulations;
- (c) Adequate current Third Party Property Liability Insurance and Third Party Personal Liability cover of not less than \$10,000,000 (Ten million dollars) for any one incident. All insurance shall be maintained during the period of racing;
- (d) The organising Authority is not responsible for the seaworthiness of a boat whose entry is accepted or the sufficiency or adequacy of its equipment;
- (e) The person who signs and lodges the entry form with the Organising Authority, warranting to the Organising Authority that he or she will draw to the attention of any person who competes on the yacht, the subject of the entry form in any event conducted by the Organising Authority of the risk warning below ;

- (f) The person who signs and lodges this entry form with the Organising Authority, acknowledging receipt of the risk warning below and releasing the Organising Authority from any claim or liability whatsoever for any harm or personal injury suffered by him, or by any person claiming through him, in any event conducted by the Organising Authority.
- (g) All those taking part in these races do so at their own risk and responsibility. Specific attention is drawn to RRS 4 which states; "The responsibility for a boat's decision to participate in a race or to continue racing is hers alone". The Gosford Sailing, Class Associations, Race Committee and other race officials are not responsible for any damage or injury either afloat or ashore prior to, during or after the event.

#### 24.2 **Risk Warning:**

Participants are warned that, regardless of the precautions, which might be taken by reasonable and experienced persons, sailing can be a dangerous pursuit and participants are exposed to significant risk of property damage, physical harm and possibly death.

As an indication, these risks may include, but are not limited to:

- The extremes of weather and sea conditions.
- The potential that control of vessels may be lost, resulting in collision with objects and other vessels.
- The sudden movement of the vessel at any time and the possibility that participants may fall or be thrown overboard, resulting in drowning.
- The possibility that participants may be injured by equipment on the vessel.
- The absence of immediate medical care and the likelihood that significant delays may occur before medical care is available.
- Exposure to the elements for extended periods.

Gosford Sailing Club, Class Associations and NSW Maritime also warn participants that regardless of their best intentions, they may be unable to render assistance to participants who are in distress. Participants are warned to consider the above risks and all other risks before deciding to participate in any sailing event with Gosford Sailing Club.

Participants are also advised that although Gosford Sailing Club is covered by third party liability insurance, this cover DOES NOT extend to participants. Any participant who considers they have a need for insurance must make their own private arrangements with an insurer. Membership of a sailing club affiliated with Yachting NSW entitles you to personal accident insurance cover.

## **25 INSURANCE**

- 25.1 Each participating boat must be insured with current third party property insurance cover and valid third party personal liability insurance cover of not less than AU\$10,000,000 (10 million dollars) or equivalent thereof in any other currency for any one claim event.

## **26 RUBBISH DISPOSAL**

- 26.1 Competitors shall not dispose of rubbish into the water. Yachts infringing may be disqualified. Spinnaker banding is exempt from this instruction. This amends RRS 55.

## **27      RIGHTS TO USE NAME AND LIKENESS**

- 27.1      In participating in this Event, a competitor automatically grants to the Organising Authority and the sponsors of this Event, the right in perpetuity to make, use and show, from time to time and at their discretion, any motion pictures, still pictures and live, taped or film television and other reproductions of him/her during the period of the competition for the Event in which the competitor participates and in all material related to the said Event without compensation.

### **FURTHER INFORMATION**

#### **Visiting Temporary Membership**

Visiting Temporary Membership of the Gosford Sailing Club has been extended to all visiting yachtsmen during the Regatta.